

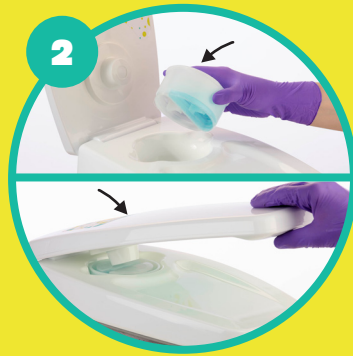
TANK



A STORAGE AND DISTRIBUTION SYSTEM FUELLED BY ClO₂ SPORICIDAL DISINFECTANT CAPSULES



Fill TANK with ambient tap water until it reaches the 5L mark. Do not use hot water.



Take one TANK ClO₂ capsule and place it face down into the TANK lid. Close the lid to burst the capsule.



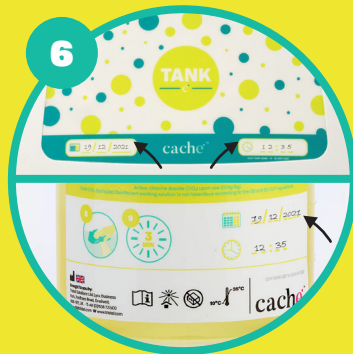
Open the lid and remove the now empty capsule. This can be rinsed out and sent for recycling.



Fill TANK with additional ambient tap water until it reaches the 10L mark. The TANK ClO₂ Disinfectant will need 15 minutes to dwell, before it is ready to use.



Grab a bottle, flip the tap to open, and fill with working solution. The reusable 500ml bottles can be paired with any of the available applicators.



Your working solution can be kept for up to 5 days within TANK or 24 hours in a 500ml bottle. To keep track of this, make a note of the time and date on the TANK lid and any bottles you decant the solution into.



Apply the working solution onto a wipe, or directly onto a surface, and wipe.



Ensure the surface remains wet for 3 minutes. Apply additional solution as needed. Leave to dry.

PRE-USE CHECKS

Some important reminders before starting:

- Use disinfectants (product type 2) safely.
- Always read the label and product information before use.
- Wear the appropriate personal protective equipment (PPE).
- TANK ClO₂ Sporicidal Disinfectant is for professional use only.
- Do not apply to brass, copper, aluminium, mild steel, or silver surfaces.
- Before preparing your solution, make sure your TANK is empty. It should be located on a flat surface, close to a water source in a central location. Remember to check the tap is closed before filling!



Refer to the User Guide for full instructions.

REFILLING YOUR TANK

Before you refill your TANK, rinse it out with tap water.

STORAGE CONDITIONS

TANK ClO₂ capsules can be kept for 2 years before being used, and should be stored in a cool dry place, out of direct sunlight, between 10°C - 35°C.

SMALL CAPSULE, BIG IMPACT

Single use plastic is rubbish. TANK's reusable plastic components are designed to last, and when they do reach the end of their life they can be recycled. But that's not all. By separating the solution from the wipe, TANK enables you to choose plastic-free wipes and use fewer of them, helping you reduce your plastic waste even further.

